



Welcome to the November 2023 newsletter

RICHMOND PRE-SCHOOL CIC



www.richmondpreschool.co.uk

Richmond Pre-school CIC -please take a look at our Facebook page and like it 😊

Richmondpreschool1- follow us !

WE ARE

Amanda, Cathy,
Denise, Elaine, Gillian,
Jade L, Jade T, Jules,
Julie S, Katie M, Katie
R, Leah, Maggie,
Michelle, Natalie,
Natasha, Olivia, Sarah
C, Sarah D, Sheri,
Wendy

Bank: Kylie, Mandy
plus students

CLIMBING FRAME SAFETY

Please keep your
children off the
climbing frame in Simba
garden when dropping
off and picking up.

SNACK CONTRIBUTIONS

Please make your
contribution for snack
for this term by
transferring over £5
per child if you are
able to.

OUR BOOK COLLECTION

If you are clearing any
books, we are particularly
interested in any hard
backed books, especially
Peppa Pig, Paw Patrol
We are also after popular
story books like the Julia
Donaldson titles that are
great for this age group.

COST OF LIVING CRISIS

If you want more
information on this
check out this from
Essex

<http://www.activeessex.org/cost-of-living-support/>

HOLIDAY DATES

Last full day for this term

Simba Room is Tuesday 12th December
Nemo Room is Wednesday 13th December

Christmas Parties

Simba party is Wednesday 13th December
from 9am-10:30am
Nemo party is Thursday 14th December 9am-
10:30am (we are not running an afternoon party
now)

Christmas singing for Nemo room

On Friday 15th December we will once again be
singing in the school hall (*for Nemo children only*)
from 9:15am, we should be finished by 10am.
Further information on the above to follow.

CHRISTMAS PHOTO CARDS

Most of the Christmas photos have been taken
now, please get in touch if your child hasn't had
their photo taken yet and you are interested. All
the information is on Tapestry.

If your child has had their photo taken please
arrange a time to come in and view them and
place your orders, speak to Sarah or Maggie.
Orders are needed by Friday 24th November.

Packs are £7.50 for a pack of 6 cards.

CHRISTMAS FAYRE AND CHRISTMAS LIGHTS SWITCH ON

Friday 1st December from 1:30pm-3:30pm

We are once again holding our Christmas Fayre,
please join us to kick off the Christmas fun.

Can you help us?

We are looking for donations for the ...
Raffle

Teddy bears / soft toys
Second-hand toy stall

Any small new items to use as prizes
Homemade cakes (delivered day before or on the
day please)

All proceeds will be used to improve the outside
areas in the Spring. Last years money was used to
buy the new climbing frame in Simba garden,
which the children love.

CURRICULUM CORNER:

Week commencing and Topic

30th Oct - Halloween / Messy Play
6th Nov - Bonfire Night/
Remembrance Day

13th Nov - World Nursery Rhymes /
Children in Need

20th Nov - North Pole

27th Nov - 13th Dec - North Pole and
Christmas

If you have any activity idea or items
we could show the children that fit in
with these topics, then please let us
know. We would also love to hear of
any ideas for future topics.

NEMO ROOM ONLY NOTICE

Primary school admissions for 2024.
Please check the Open Days at local
schools for you to visit.
Primary School admissions
applications have now opened.

All applications must be made by 15th
January 2024.

For more information:
<http://www.essex.gov.uk/admissions>

Photo's by Rebecca Photography

Please place your orders online
on the website by Tuesday
14th November, 3pm.

PRE-SCHOOL SICKNESS POLICY

Please inform us via phone or email if
your child is not going to be in pre-
school due to illness. Please include
their symptoms, so we can monitor
for any viruses that may affect
others.

Our mobile phone is up and running
and you should all have been given
access to our Nemo or Simba
WhatsApp groups. Please let us know
if not and we will add you.

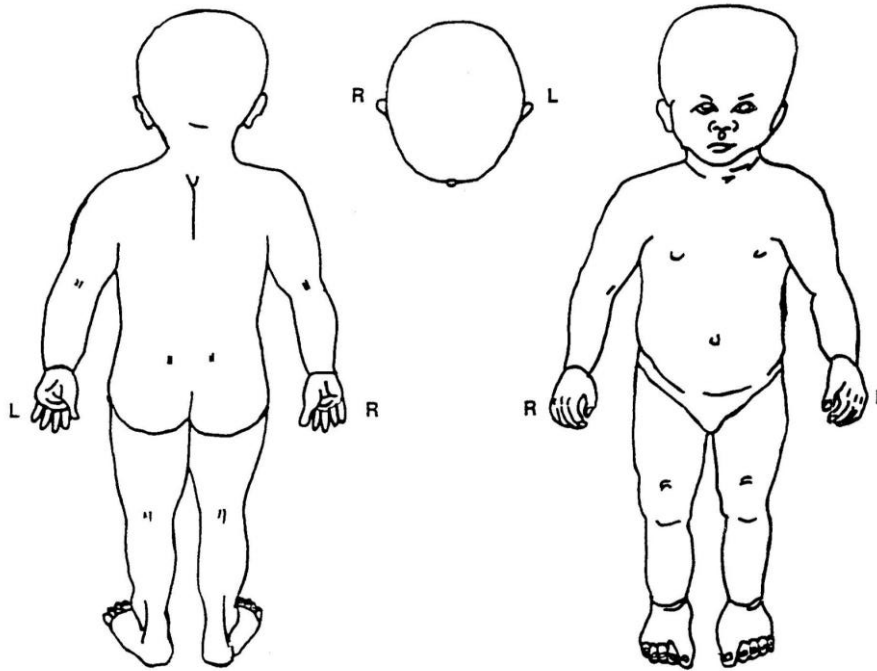
SAFEGUARDING

After reviewing our current procedures on the recording of accidents that children enter the setting with, we are updating the form we use to record these injuries.

Below is a copy of the form that you will be asked to complete if your child has an accident (not while at pre-school) that results in a mark on their body. The form will be put on our web site for you to print at home and bring along when your child comes in or alternatively you can complete it at pre-school. If your child is noticed to have a bruise or cut we will approach you and ask you to complete a form.

This form serves two purposes, to make us aware of any extra care your child may require at pre-school due to an injury and to fulfil our safeguarding requirement in line with Ofsted recommendations.

Record of children entering Richmond Pre-school with existing injury



Please use a pen (not black) to mark on the diagram where the injury is, (roughly in scale) and complete the information below :-

Name of Child :		DOB:	
Today's date :		Date injury occurred :	
Where is the injury? :			
How did it happen? :			
If there is bruising now, what colour is it? :			
Did they need to go to hospital? :			
If there anything else we need to know about? :			
Parent / Carer :		Relationship to child :	
Practitioners name who recorded this :			